



Adult Collectible  
20796/94729 Asst.

DARTH MAUL™

FORCE FX LIGHTSABER™ COLLECTIBLE  
with Removable Blade



**x3 ALKALINE BATTERIES REQUIRED**  
1.5V AAA or LR03 size  
NOT INCLUDED

Phillips/cross head screwdriver (not included)  
needed to insert batteries.

Some assembly required.

**PLEASE RETAIN INSTRUCTIONS FOR FUTURE REFERENCE.**

Never use to strike people or animals.



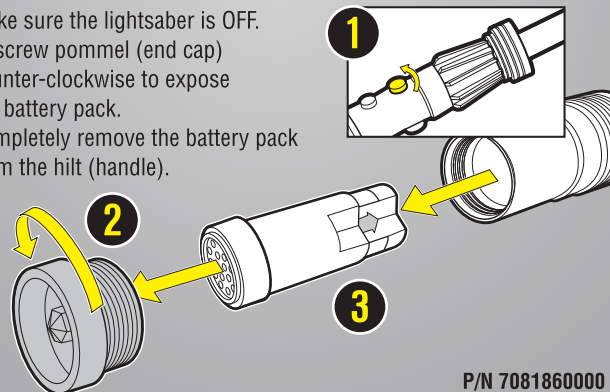
## WARNING!

To prevent risk of electric shock or serious injury, never disassemble the lightsaber blade.

- **DO NOT attempt to perform any repairs yourself.** There are no consumer repairable parts inside.
- **Never use to strike others.** This product is not intended for striking people, animals or objects. This product is not covered by warranty for damage caused by striking against hard objects.
- **Never run with the lightsaber.** Never use the lightsaber in total darkness.
- Always check the area around you before swinging the lightsaber to ensure you do not injure anyone or cause damage.
- Turn off the lightsaber when not in use. Never leave the lightsaber on when unattended.
- To prevent risk of electric shock or serious injury, never immerse the lightsaber in water or allow the lightsaber to become wet. Use only a soft, dry cloth to clean.
- If the blade of the lightsaber becomes cracked or damaged, stop using the lightsaber immediately.

## BATTERY INSTALLATION & ASSEMBLY

1. Make sure the lightsaber is OFF.
2. Unscrewommel (end cap) counter-clockwise to expose the battery pack.
3. Completely remove the battery pack from the hilt (handle).



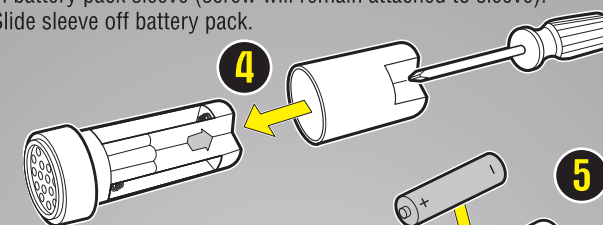
P/N 7081860000

Product and colors may vary.  
© 2010 Lucasfilm Ltd. & © or TM where indicated. All rights reserved.  
®\* and/or TM\* & © 2009 Hasbro. All Rights Reserved.  
TM & © denote U.S. trademarks.

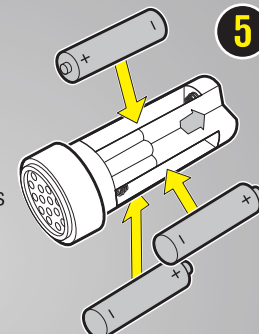
## BATTERY INSTALLATION & ASSEMBLY

(Continued)

4. Using a Phillips/crosshead screwdriver (not included), loosen screw in battery pack sleeve (screw will remain attached to sleeve). Slide sleeve off battery pack.

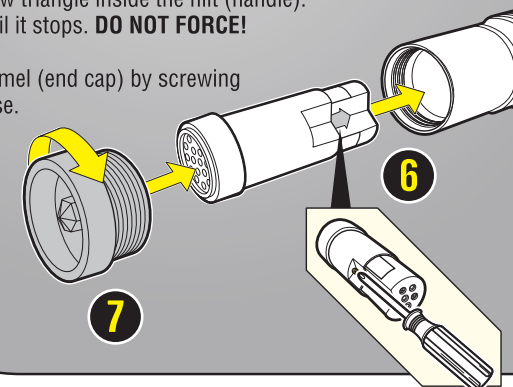


5. Insert 3 x 1.5V "AAA" or LR03 size alkaline batteries in the battery pack. Make sure the batteries are correctly oriented; refer to the + and - markings as a guide.



6. To re-insert the battery pack, slide sleeve back onto pack, and tighten screw. Align the yellow arrow on the pack with the yellow triangle inside the hilt (handle). Slide it in until it stops. **DO NOT FORCE!**

7. Replaceommel (end cap) by screwing it on clockwise.



## IMPORTANT: BATTERY INFORMATION



### CAUTION:

1. As with all small batteries, the batteries used with this product should be kept away from small children who still put things in their mouths. If they are swallowed, promptly see a doctor and have the doctor phone (202) 625-3333 collect. If you reside outside the United States, have the doctor call your local poison control center.
2. Always follow the instructions carefully. Use only batteries specified and be sure to insert them correctly by matching the + and - polarity markings.
3. Do not mix old batteries and new batteries or standard (carbon-zinc) with alkaline batteries.
4. Remove exhausted or dead batteries from the product.
5. Remove batteries if product is not to be played with for a long time.
6. Do not short-circuit the supply terminals.
7. Should this product cause, or be affected by, local electrical interference, move it away from other electrical equipment. Reset (switching off and back on again or removing and re-inserting batteries) if necessary.
8. **RECHARGEABLE BATTERIES:** Do not mix these with any other types of batteries. Always remove from the product before recharging. Recharge batteries under adult supervision. **DO NOT RECHARGE OTHER TYPES OF BATTERIES.**

#### FCC Statement:

This device complies with part 15 of the FCC Rules. Operation is subject to the following two conditions: (1) This device may not cause harmful interference, and (2) this device must accept any interference received, including interference that may cause undesired operation. This equipment has been tested and found to comply with the limits for a Class B digital device, pursuant to part 15 of the FCC Rules. These limits are designed to provide reasonable protection against harmful interference in a residential installation. This equipment generates, uses and can radiate radio frequency energy, and, if not installed and used in accordance with the instructions, may cause harmful interference to radio communications. However, there is no guarantee that interference will not occur in a particular installation. If this equipment does cause harmful interference to radio or television reception, which can be determined by turning the equipment off and on, the user is encouraged to try to correct the interference by one or more of the following measures:

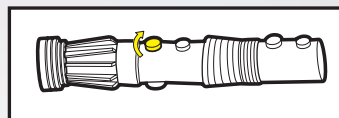
- Reorient or relocate the receiving antenna.
- Increase the separation between the equipment and receiver.
- Consult the dealer or an experienced radio/TV technician for help.

**CAUTION:** Changes or modifications to this unit not expressly approved by the party responsible for compliance could void the user's authority to operate the equipment.

## OPERATING INSTRUCTIONS

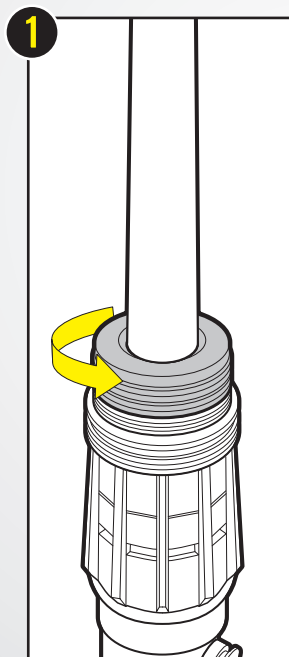
### On/Off

Locate the ON/OFF knob on the control panel as shown in the diagram. To turn the lightsaber ON, turn the knob clockwise. To turn the lightsaber OFF, turn the knob counter-clockwise.

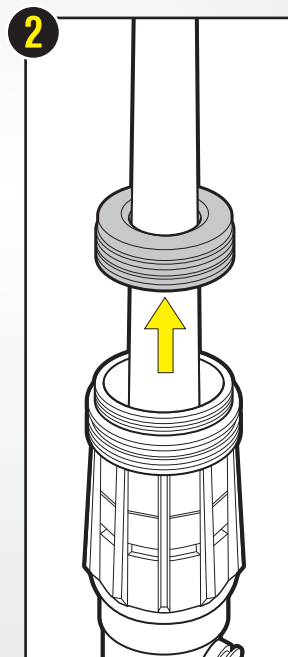


**NOTE:** The hilt makes "short-circuit" sounds if you press the button when the blade is separated from the hilt.

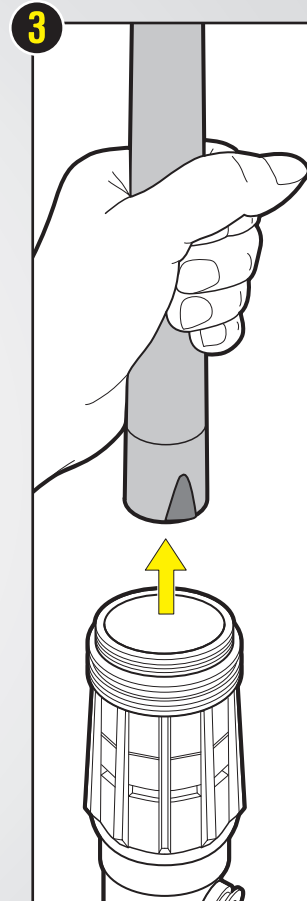
## BLADE REMOVAL



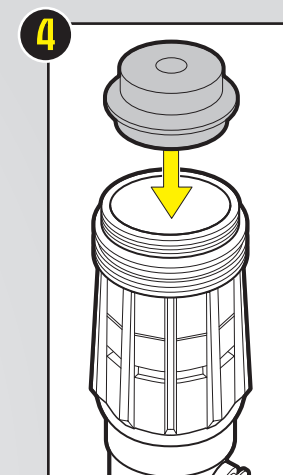
Unscrew the emitter ring.



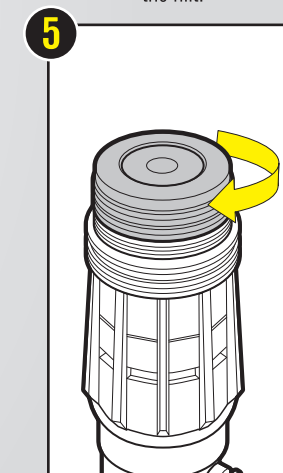
Slide the emitter ring up and off the blade.



Remove the blade from the hilt.

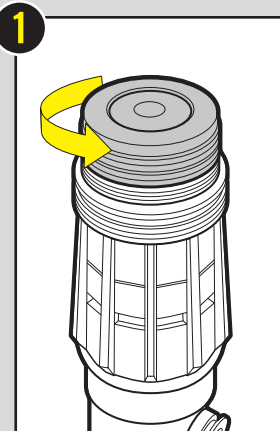


Place the insert in the opening in the hilt.

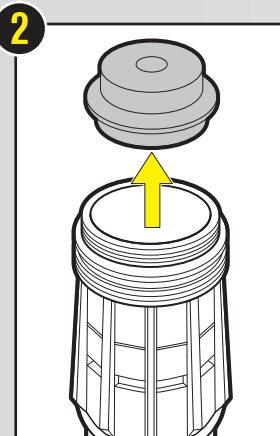


Screw the emitter ring onto the hilt to secure the insert in place.

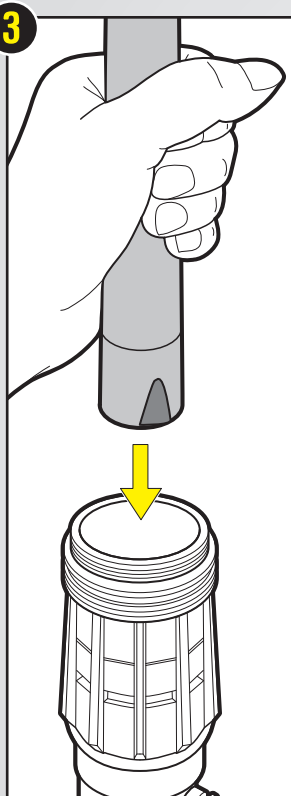
## BLADE REPLACEMENT



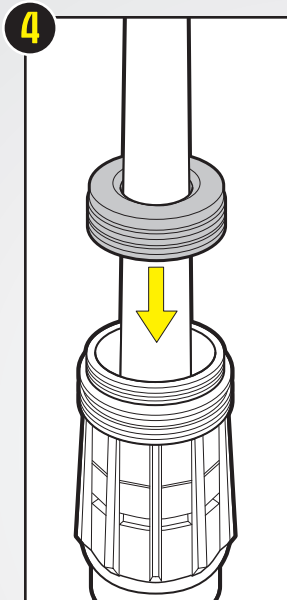
Unscrew the emitter ring.



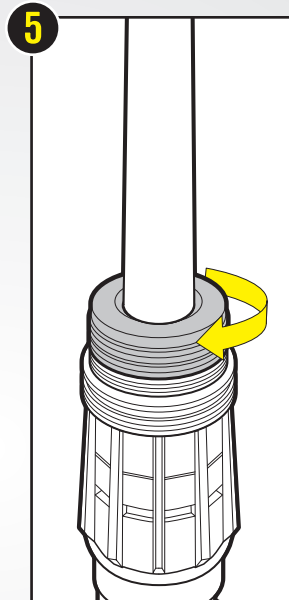
Remove the insert from the hilt.



Slide the blade into the hilt, **aligning the notch in the blade with the triangle inside the hilt**. You may need to rotate the blade once it is in the hilt until the notch is aligned with the triangle and slides into position.



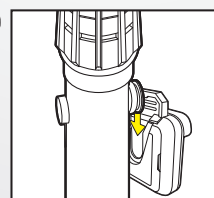
Slide the emitter ring over the blade.



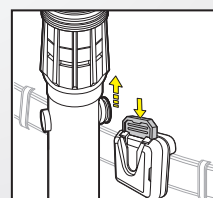
Screw the emitter ring onto the hilt.

## BELT CLIP

Use the clip to attach the hilt to a belt when the blade is removed.



Slide the knob on the hilt into the slot on the clip.

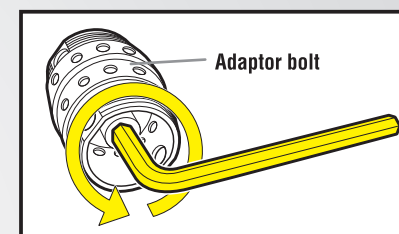


To remove the hilt from the clip, press down on the release and lift up the hilt.

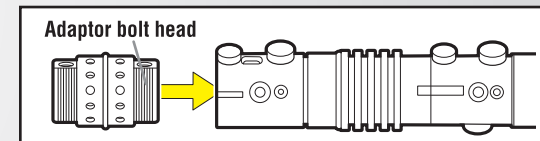
## CONNECTING 2 DARTH MAUL FORCE FX LIGHTSABERS TO MAKE A DOUBLE-BLADED FORCE FX LIGHTSABER (second lightsaber sold separately)

Please be careful when attaching the adaptor as the battery pack may slide out.

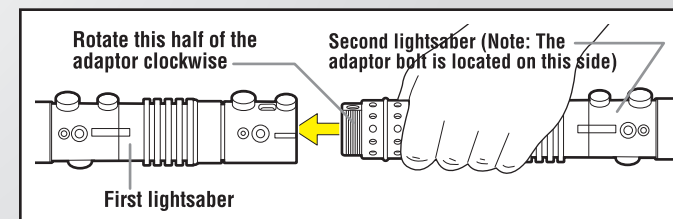
1. Locate the adaptor and Allen wrench. With the Allen wrench, unscrew the adaptor bolt (located inside the adaptor) approximately one turn, so that the two halves of the adaptor are just able to freely rotate.



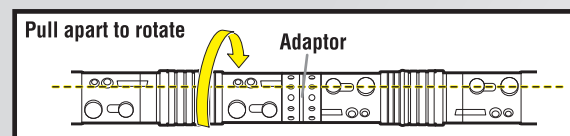
2. Take one of the Force FX Lightsabers and remove the battery end cap, if attached, and replace with the supplied adaptor, ensuring that the adaptor bolt head is exposed. Tighten until secure. **DO NOT OVERTIGHTEN.**



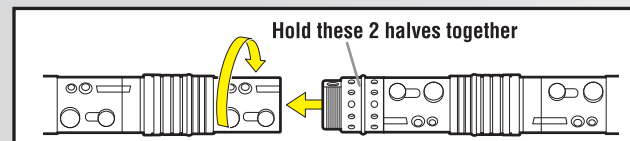
3. Take the second Force FX Lightsaber and remove the battery end cap, if attached. Screw on this second lightsaber to the adaptor, already attached to the first lightsaber, by holding the second lightsaber securely and rotating the loose half of the adaptor clockwise until secure. **DO NOT OVERTIGHTEN.** Please note: this second lightsaber will be removed in Step 5, so keep track of this side.



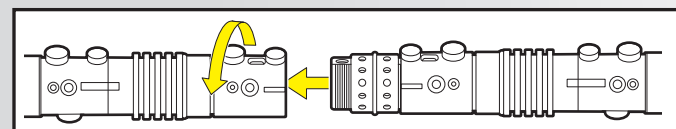
4. Line up the red and silver knobs on both lightsabers by rotating the two lightsabers about the adaptor. Note: you will have to pull apart the two halves of the adaptor to disengage the indexing ribs to rotate.



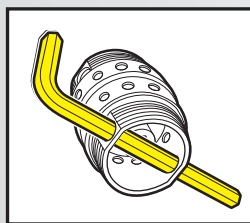
5. With one hand holding the two halves of the adaptor together to prevent them from rotating, use your other hand to carefully unscrew and remove the second lightsaber to expose the adaptor bolt again. While still securely holding the two halves of the adaptor, tighten the adaptor bolt with the hex key. **DO NOT OVERTIGHTEN.**



6. Once the adaptor bolt is tightened, re-attach the second lightsaber. The red and silver knobs of both lightsabers should now be in line.



In case the adaptor gets overtightened to the handle, use the supplied Allen wrench to loosen the adaptor as shown.

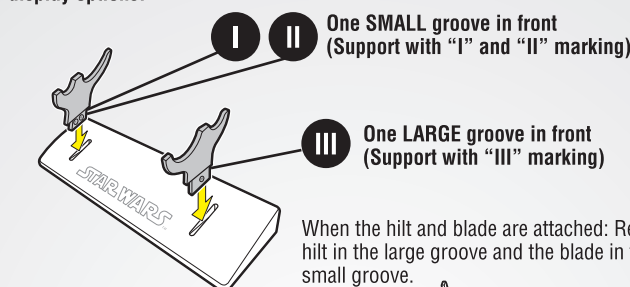


Please note that this procedure may take several tries to correctly get the red knobs in line, but once this procedure is done, the adaptor should not need to be adjusted again.

Note: It is not necessary that the red and silver knobs line up. It does not affect the function of the lightsaber. However, this will make the appearance of your lightsaber more accurate to the actual prop that was used in the movie.

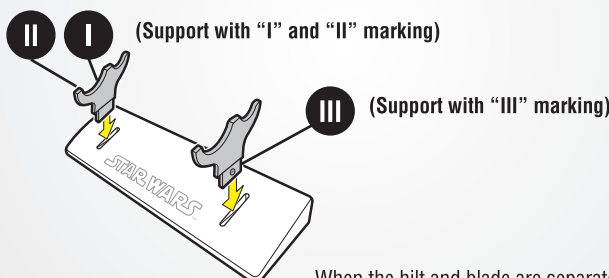
## DISPLAY STAND

The holders on the stand can be positioned differently for multiple display options.

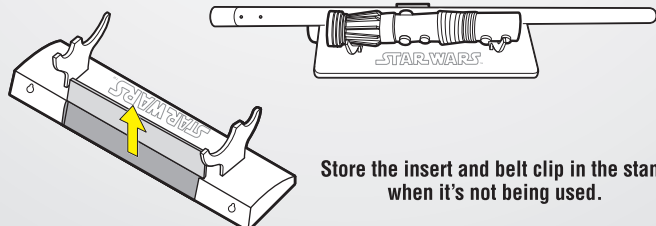


When the hilt and blade are attached: Rest the hilt in the large groove and the blade in the small groove.

Both LARGE grooves in front:



When the hilt and blade are separated: Rest the hilt in the LARGE grooves in the front, and the blade in the SMALL grooves in the back.



Store the insert and belt clip in the stand when it's not being used.

## FREQUENTLY ASKED QUESTIONS

Q: Is the Force FX Lightsaber a licensed collectible?

A: Yes. The Force FX Lightsaber is a licensed collectible approved and endorsed by Lucasfilm Ltd. As a collectible, the Force FX Lightsaber is not suitable for children under 14 years of age. Adult supervision is recommended.

Q: Is the Force FX Lightsaber a limited edition prop replica?

A: No. Although the design of the Force FX Lightsaber is faithful to the look of the movie prop, it is not an exact replica. The hilt of the Force FX Lightsaber was made slightly larger than the actual movie prop in order to accommodate the electronics that control the light and sound effects. The Force FX Lightsaber collectibles are not limited to a pre-determined edition size; therefore, they are not classified as limited edition replicas.

Q: What is the blade on the Force FX Lightsaber made of?

A: The Force FX Lightsaber features a polycarbonate blade. Once activated, the blade glows brightly and the replica plays back digitally recorded sound effects taken directly from the film.

Q: Is the blade on the Force FX Lightsaber removable?

A: Yes, the blade is removable; please refer to instructions on this sheet for proper removal.

Q: How do the light and sound effects work in the Force FX Lightsaber?

A: The Force FX Lightsaber incorporates motion sensors, which sense both the motion of the blade as well as when it comes in contact with something. An on-board, multi-channel chip is programmed with digital sound effects originally created for the movie by Skywalker Sound. The Force FX Lightsaber replicates the following sound effects:

- Power-up
- Idle hum
- Swing (with pitch change)
- Clash
- Power-down

Q: How long should the light in the Force FX Lightsaber last?

A: It should run for several hours on a fresh set of batteries. The electronics, if cared for properly, should last for several thousand hours of use. Replace the batteries whenever the performance begins to change, such as reduced brightness or volume.

Q: Can I use my Force FX Lightsaber for dueling?

A: No. This product should not be used to strike people or animals. Although the blade is very durable, it should never be used for fighting or dueling. The Force FX Lightsaber was produced to be a collectible.

Q: Sometimes I see a dark spot in the middle of the blade. Is there something wrong with the lightsaber?

A: No. The dark area is actually a result of the design. All the Force FX Lightsabers are handmade and as a result, this slightly dark area at the middle of the blade is normal. This does not affect the performance of the lightsaber in any way.